

## 19" PROline 500-O Safebox Outdoor Double Skin IP55 Cabinets



### PROline 500-O series Safebox Outdoor IP55 Cabinets 7U/9U/12U/16U W600mm x D300/450/600mm

Mono-block welded construction, coated with polyester type powder, on RAL 7035 - Light Grey.

7U - 9U have one key-locking quarter-turn wing knob, 12U - 16U have two key-locking quarter-turn wing knobs.

1 set of 19" front equipment mounting rails.

4 x PG21 cable entries blind plugs.

The safebox has one filtered air inlet and a filtered passive ventilation and hot air exhaust. Where required the filterers can be replaced with an exhaust fan or an an exhaust fan with thermostat (optional accessories).

Wall mounting brackets and grounding cable are included.

The metallic front door has polyurethane sealing gasket compatible with EN 60529 IP54/IP55 class protection. IP code can be upgraded up to IP66 by replacing the fan ventilation slots with cover plates.

The maximum load capacity is up to 300 kg as a wall mounted and up to 800 kg as a free standing.

Safebox can be floor mounted when using a plinth.

An optional rear mounting plate can be used to host industrial or electrical equipment that can not be mounted on 19" rails (optional)

#### Production Standards :

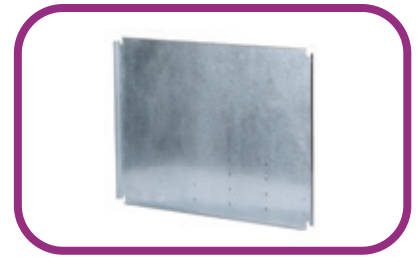
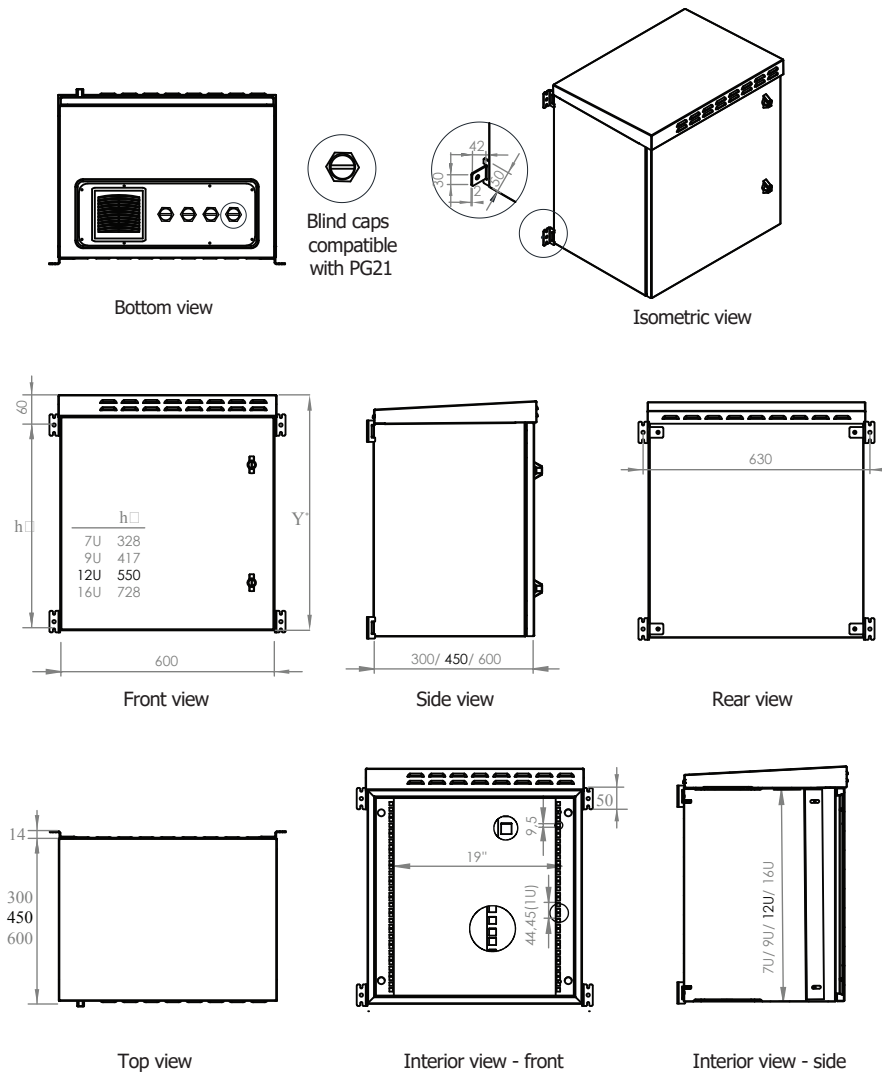
- ISO 9001:2015 - Quality Management System
- ISO 14001:2015 - Environmental Management System

#### Compliance:

- EN 61587-1 Mechanical structures for electronic equipment - Tests for IEC 60917 and IEC 60297 series
- Climatic and Environment: EN 61587-1/4.2, IEC60068-2-1, IEC60068-2-2, IEC60068-2-30
- Static Mechanical Load Lifting: EN 61587-1/5.2.1
- Static Mechanical Load Stiffness: EN 61587-1/5.2.2
- Dynamic Mechanical Load Vibration and Shock, Impact: EN61587-1/5.3.1, EN61587-1/5.3.3, IEC60068-2-6, IEC60068-2-27
- Earth Bond: EN61587-1/6.2
- Flammability: EN 61587-1/6.3
- Degrees of Protection Provided by Enclosures (Ip Code): IP55
- EN 13501-1+ A1- Epoxy Powder coated compliant to Fire classification of construction products and building elements -Part 1: Classification using data from reaction to fire tests
- Epoxy Powder coating tested as per EN ISO 9227 and ASTM B 117 Corrosion tests in artificial atmospheres - Salt spray tests; minimum 1000 hours
- EN ISO 2409 Paints and varnishes - Cross-cut test
- EN ISO 2178 Non-magnetic coatings on magnetic substrates -
- Measurement of coating thickness - Magnetic method
- RoHS Compliancy according to 2011/65/EU
- CE Compliant to EN 60950-1



# 19" PROline 500-O Safebox Outdoor Double Skin IP55 Cabinets



## PROline 500-O Safebox Outdoor - Double Skin

Product Number	Dimensions WxDxH mm	Package Size WxDxH mm	Product Description
LN-ESD-IP5507U6030-LG	600x300x378	650x350x394	7U 19" W600mm x D300mm Outdoor IP55 Cabinet - Double Skin
LN-ESD-IP5509U6030-LG	600x300x467	650x350x483	9U 19" W600mm x D300mm Outdoor IP55 Cabinet - Double Skin
LN-ESD-IP5512U6030-LG	600x300x600	650x350x616	12U 19" W600mm x D300mm Outdoor IP55 Cabinet - Double Skin
LN-ESD-IP5516U6030-LG	600x300x779	650x350x795	16U 19" W600mm x D300mm Outdoor IP55 Cabinet - Double Skin

## PROline 500-O Safebox Outdoor - Double Skin

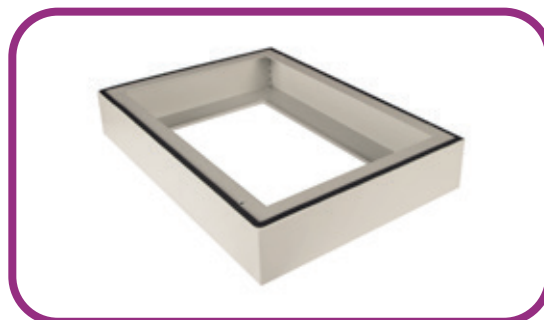
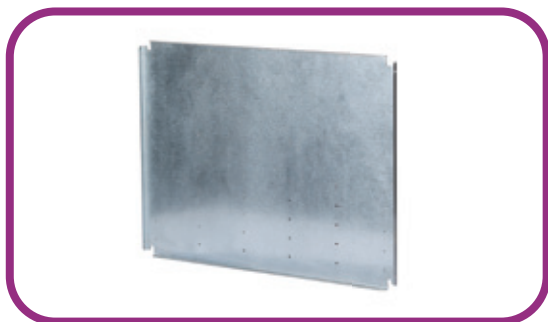
Product Number	Dimensions WxDxH mm	Package Size WxDxH mm	Product Description
LN-ESD-IP5507U6045-LG	600x450x378	650x500x394	7U 19" W600mm x D450mm Outdoor IP55 Cabinet - Double Skin
LN-ESD-IP5509U6045-LG	600x450x467	650x500x483	9U 19" W600mm x D450mm Outdoor IP55 Cabinet - Double Skin
LN-ESD-IP5512U6045-LG	600x450x600	650x500x616	12U 19" W600mm x D450mm Outdoor IP55 Cabinet - Double Skin
LN-ESD-IP5516U6045-LG	600x450x779	650x500x795	16U 19" W600mm x D450mm Outdoor IP55 Cabinet - Double Skin

## PROline 500-O Safebox Outdoor - Double Skin

Product Number	Dimensions WxDxH mm	Package Size WxDxH mm	Product Description
LN-ESD-IP5507U6060-LG	600x600x378	650x650x394	7U 19" W600mm x D600mm Outdoor IP55 Cabinet - Double Skin
LN-ESD-IP5509U6060-LG	600x600x467	650x650x483	9U 19" W600mm x D600mm Outdoor IP55 Cabinet - Double Skin
LN-ESD-IP5512U6060-LG	600x600x600	650x650x616	12U 19" W600mm x D600mm Outdoor IP55 Cabinet - Double Skin
LN-ESD-IP5516U6060-LG	600x600x779Z	650x650x795	16U 19" W600mm x D600mm Outdoor IP55 Cabinet - Double Skin

\* H length can be checked from the product dimensions.

## 19" PROline 500-O Safebox Accessories



### Fan Module with Analog Thermostat Swtich- 220 V AC

Product Number	Product Model	Dimensions WxDxH mm	Description
LN-FAN-THM-1FSBE-LG	Accessory	495x175x50	Single Fan Module with Analog Thermostat Swtich, Filtered

### Pole Mounting Kit - Floor Mounting Applications

Product Number	Product Model	Dimensions WxDxH mm	Description
LN-ESO-PL-KIT-ZN	Accessory	598x204x80	Pole Mounting Kit, for 4-6" diameter poles, Galvanized
LN-PLNTH-D30-LG	Accessory	600x300x100	Plinth H: 100mm W:600xD300 RAL7035 Light Grey
LN-PLNTH-D45-LG	Accessory	600x450x100	Plinth H: 100mm W:600xD450 RAL7035 Light Grey
LN-PLNTH-D60-LG	Accessory	600x600x100	Plinth H: 100mm W:600xD600 RAL7035 Light Grey

### Mounting Plates for PROline 500 Safebox Cabinets

Product Number	Product Model	Dimensions WxDxH mm	Description
LN-TS-07U-SBE-ZN	Accessory	t 1mm H350 mm W 575 mm	7U Mounting Plate - Galvanized
LN-TS-09U-SBE-ZN	Accessory	t 1mm H400 mm W 575 mm	9U Mounting Plate - Galvanized
LN-TS-12U-SBE-ZN	Accessory	t 1mm H570 mm W 575 mm	12U Mounting Plate - Galvanized
LN-TS-16U-SBE-ZN	Accessory	t 1mm H748 mm W 575 mm	16U MMounting Plate - Galvanized

To be mounted on the internal surface of the rear panel of the cabinet. Allows industrial components, electrical components and DIN rails mounting.