

19" PROline 400P Series Server Cabinets with Perforated Door



STANDARD



OPTIONAL



Free Standing PROline 400P Series Server Cabinets with Perforated Door 26U/36U/42U/47U W600xD1000mm

Modular with screws, multi folded construction, RAL 9005 epoxy polyester powder coating.

The front door is a multi-folded metallic, 63% perforated monoblock. The rear door is also metallic and perforated. Both doors have single point barrel lock. Also the rack has removable and lockable lockable side panels.

1 set of 19" front depth adjustable equipment mounting rails & 1 set of 19" rear fixed equipment mounting rails, U height numbered. Vertical cable organiser is available as an accessory.

Removable cable entry panels connected with micro joints are located at the bottom side. PVC and brushed cable entrances are located at the top side. The accessory sliding cable entry can be inserted at the bottom side during the field applications.

Ventilation slots for active and passive ventilation are available on the top side (2 or 4 fans applicable).

Maximum load capacity is 600kg.

Four M10 adjustable feet group included, replaceable by a castor set (optional).

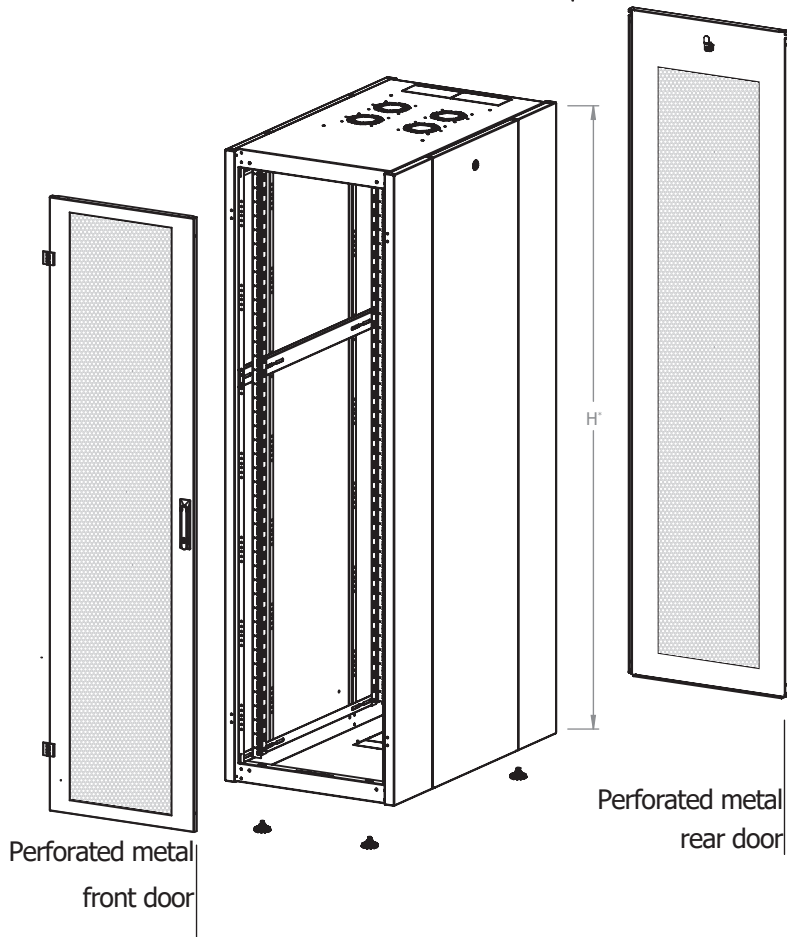
Production Standards :

- ISO 9001:2015 - Quality Management System
- ISO 14001:2015 - Environmental Management System

Compliance:

- EN 61587-1 Mechanical structures for electronic equipment - Tests for IEC 60917 and IEC 60297 series
- Climatic and Environment: EN 61587-1/4.2, IEC60068-2-1, IEC60068-2-2, IEC60068-2-30
- Static Mechanical Load Lifting: EN 61587-1/5.2.1
- Static Mechanical Load Stiffness: EN 61587-1/5.2.2
- Dynamic Mechanical Load Vibration and Shock, Impact: EN61587-1/5.3.1, EN61587-1/5.3.3, IEC60068-2-6, IEC60068-2-27
- Earth Bond: EN61587-1/6.2
- Flammability: EN 61587-1/6.3
- Degrees of Protection Provided by Enclosures (Ip Code): IP20
- EN 13501-1+ A1- Epoxy Powder coated compliant to Fire classification of construction products and building elements -Part 1: Classification using data from reaction to fire tests
- Epoxy Powder coating tested as per EN ISO 9227 and ASTM B 117 Corrosion tests in artificial atmospheres - Salt spray tests; minimum 1000 hours
- EN ISO 2409 Paints and varnishes - Cross-cut test
- EN ISO 2178 Non-magnetic coatings on magnetic substrates -
- Measurement of coating thickness - Magnetic method
- RoHS Compliancy according to 2011/65/EU
- CE Compliant to EN 60950-1

19" PROline 400P Series Server Cabinets with Perforated Door



PROline 400P Free Standing - Perforated Door

Product Number	Dimensions WxDxH mm	Package Size WxDxH mm	Product Description
LN-HL26U6010-BL-C	600x1000x1299	650x1050x1309	26U W600mm x D1000mm Free Standing Cabinet - Perforated Door
LN-HL36U6010-BL-C	600x1000x1744	650x1050x1754	36U W600mm x D1000mm Free Standing Cabinet - Perforated Door
LN-HL42U6010-BL-C	600x1000x2010	650x1050x2020	42U W600mm x D1000mm Free Standing Cabinet - Perforated Door
LN-HL47U6010-BL-C	600x1000x2232	650x1050x2242	47U W600mm x D1000mm Free Standing Cabinet - Perforated Door

* H length can be checked from the product dimensions..

19" PROline 400P Series Server Cabinets with Perforated Door



STANDARD



OPTIONEL



Free Standing PROline 400P Series Server Cabinets with Perforated Doors 42U/47U W800xD1000mm

Multi folded modular design clamped with screws, coated with RAL 9005 epoxy polyester powder.

The front door is a multi-folded metallic, 63% perforated and double opening. The rear door is also metallic and perforated. Both doors have single point barrel lock systems. Also the rack has removable and lockable lockable side panels.

1 set of 19" front depth adjustable equipment mounting rails & 1 set of 19" rear fixed equipment mounting rails, U height numbered. Vertical cable organiser is available as an accessory.

Removable cable entry panels connected with micro joints are located at the bottom side. PVC and brushed cable entrances are located at the top side. The accessory sliding cable entry can be inserted at the bottom side during the field applications.

Ventilation slots for active and passive ventilation are available on the top side (2 or 4 fans applicable).

Maximum load capacity up to 600kg.

Four M10 adjustable feet group included, replaceable by a castor set (optional).

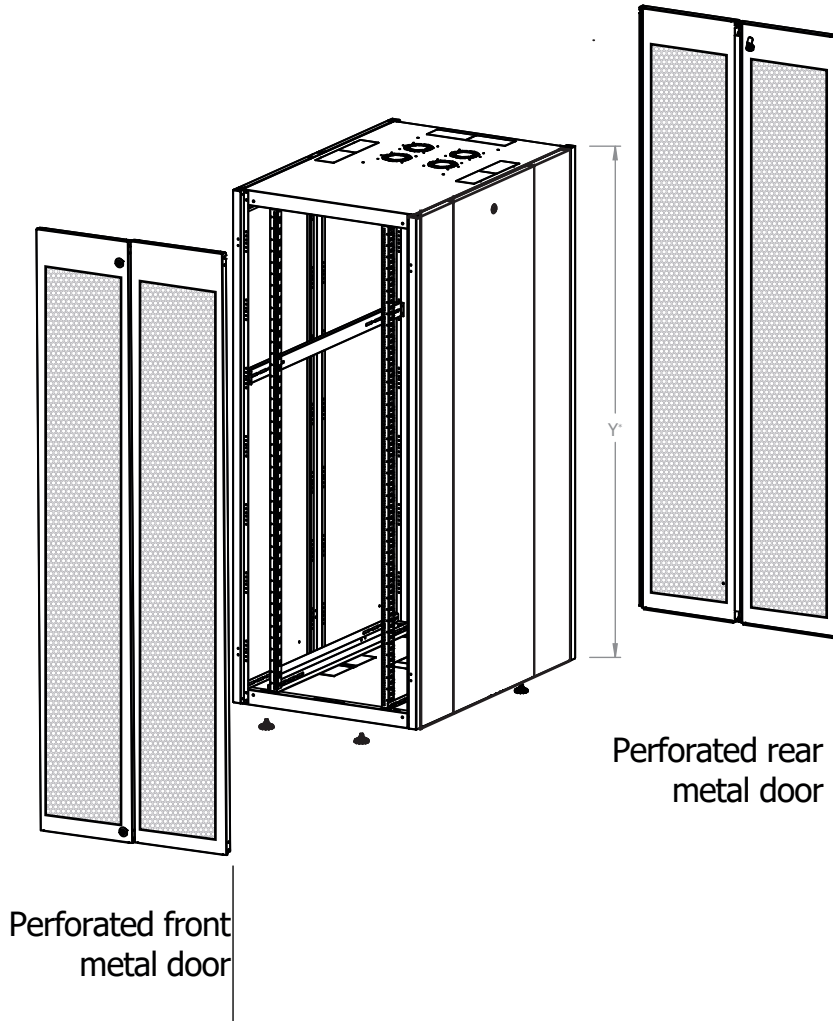
Production Standards :

- ISO 9001:2015 - Quality Management System
- ISO 14001:2015 - Environmental Management System

Compliance:

- EN 61587-1 Mechanical structures for electronic equipment - Tests for IEC 60917 and IEC 60297 series
- Climatic and Environment: EN 61587-1/4.2, IEC60068-2-1, IEC60068-2-2, IEC60068-2-30
- Static Mechanical Load Lifting: EN 61587-1/5.2.1
- Static Mechanical Load Stiffness: EN 61587-1/5.2.2
- Dynamic Mechanical Load Vibration and Shock, Impact: EN61587-1/5.3.1, EN61587-1/5.3.3, IEC60068-2-6, IEC60068-2-27
- Earth Bond: EN61587-1/6.2
- Flammability: EN 61587-1/6.3
- Degrees of Protection Provided by Enclosures (Ip Code): IP20
- EN 13501-1+ A1- Epoxy Powder coated compliant to Fire classification of construction products and building elements -Part 1: Classification using data from reaction to fire tests
- Epoxy Powder coating tested as per EN ISO 9227 and ASTM B 117 Corrosion tests in artificial atmospheres - Salt spray tests; minimum 1000 hours
- EN ISO 2409 Paints and varnishes - Cross-cut test
- EN ISO 2178 Non-magnetic coatings on magnetic substrates -
- Measurement of coating thickness - Magnetic method
- RoHS Compliancy according to 2011/65/EU
- CE Compliant to EN 60950-1

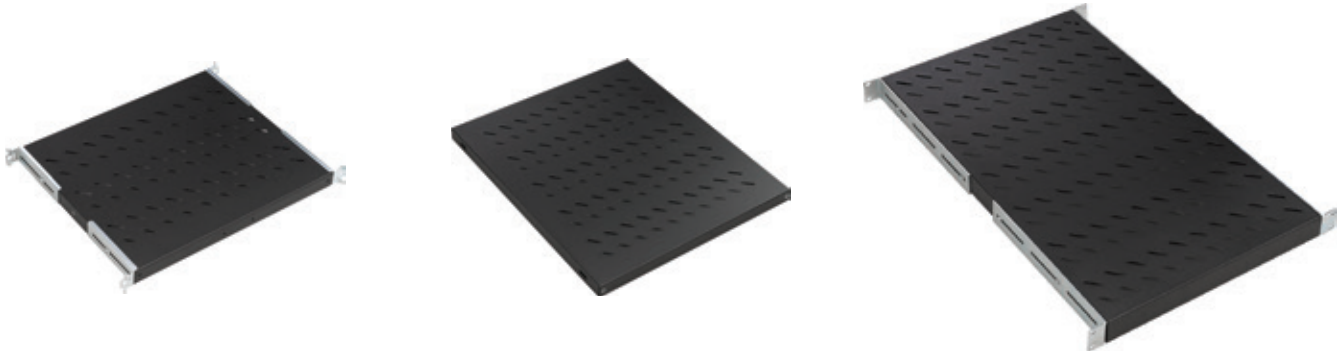
19" PROline 400P Series Server Cabinets with Perforated Door



PROline 400P Free Standing - Perforated Door			
Product Number	Dimensions WxDxH mm	Package Size WxDxH mm	Product Description
LN-HL42U8010-BL-C	800x1000x2010	850x1050x2020	42U W800mm x D1000mm Free Standing Cabinet - Perforated Door
LN-HL47U8010-BL-C	800x1000x2232	850x1050x2242	47U W800mm x D1000mm Free Standing Cabinet - Perforated Door

* H length can be checked from the product dimensions.

19" PROline 400/400P Series Free Standing Cabinets Accessories



Frequently Used Accessories
19" PROline 400/400P Series Free Standing Cabinet Dimensions (W:Width mm D:Depth mm)

	W:600 x D:600	W:600 x D:800	W:600 x D:1000	W:800 x D:600	W:800 x D:800	W:800 x D:1000
Fixed Shelves Compatible with Lande Cabinets	LN-RAF-SBT-D600-CC	LN-RAF-SBT-D800-CC	LN-RAF-SBT-D100-CC	LN-RAF-SBT-D600-CC	LN-RAF-SBT-D800-CC	LN-RAF-SBT-D100-CC
Universal Fixed Compatible with All Cabinets	LN-RAF-SBT-D600-CC-UNV	LN-RAF-SBT-D800-CC-UNV	LN-RAF-SBT-D100-CC-UNV	LN-RAF-SBT-D600-CC-UNV	LN-RAF-SBT-D800-CC-UNV	LN-RAF-SBT-D100-CC-UNV
Heavy Duty Type Shelves	-	-	LN-RAF-SBA-D100-CC	-	-	LN-RAF-SBA-D100-CC

**CC= Color codification- Replace CC with BL for Black RAL 9005 Color- and Replace CC with LC for Light Grey RAL 7035 Color.



Frequently Used Accessories
19" PROline 400/400P Series Free Standing Cabinet Dimensions (W:Width mm D:Depth mm)

	W:600 x D:600	W:600 x D:800	W:600 x D:1000	W:800 x D:800	W:800 x D:1000
Sliding Shelves	LN-RAF-HRK-D600-BL	LN-RAF-HRK-D800-BL	-	LN-RAF-HRK-D800-BL	-
Heavy Duty Type Sliding Shelves	-	-	LN-RAF-HRA-D100-BL	-	LN-RAF-HRA-D100-BL



Frequently Used Accessories
19" PROline 400/400P Series Free Standing Cabinet Dimensions (W:Width mm D:Depth mm)

	W:600 x D:600	W:600 x D:800	W:600 x D:1000	W:800 x D:800	W:800 x D:1000
2 Fan Module On/Off Switched	LN-FAN-ONF-2FFS-BL	LN-FAN-ONF-2FFS-BL	LN-FAN-ONF-2FFS-BL	LN-FAN-ONF-2FFS-BL	LN-FAN-ONF-2FFS-BL
2 Fan Module Thermostat Switched	LN-FAN-THM-2FFS-BL	LN-FAN-THM-2FFS-BL	LN-FAN-THM-2FFS-BL	LN-FAN-THM-2FFS-BL	LN-FAN-THM-2FFS-BL
4 Fan Module On/Off Switched	LN-FAN-ONF-4FFS-BL	LN-FAN-ONF-4FFS-BL	LN-FAN-ONF-4FFS-BL	LN-FAN-ONF-4FFS-BL	LN-FAN-ONF-4FFS-BL
4 Fan Module Thermostat Switched	LN-FAN-THM-4FFS-BL	LN-FAN-THM-4FFS-BL	LN-FAN-THM-4FFS-BL	LN-FAN-THM-4FFS-BL	LN-FAN-THM-4FFS-BL
Horizontal Cable Management Panel 19" 1U 5 rings	LN-KDG-YKD-1UKN-BL	LN-KDG-YKD-1UKN-BL	LN-KDG-YKD-1UKN-BL	LN-KDG-YKD-1UKN-BL	LN-KDG-YKD-1UKN-BL

ACCESSORIES



Frequently Used Accessories
19" PROline 400/400P Series Free Standing Cabinet Dimensions (W:Width mm D:Depth mm)

	W:600 x D:600	W:600 x D:800	W:600 x D:1000	W:800 x D:800	W:800 x D:1000
Vertical Cable Manager	-	-	-	LN-KDG-ORG-xxEU-BL	LN-KDG-ORG-xxEU-BL

**XX is the U height of Vertical cable manager, according to selected height of cabinet, please define U height while creating order.



Frequently Used Accessories
19" PROline 400/400P Series Free Standing Cabinet Dimensions (W:Width mm D:Depth mm)

	W:600 x D:600	W:600 x D:800	W:600 x D:1000	W:800 x D:600	W:800 x D:800	W:800 x D:1000
Caster Group; 2 with brakes, 2 without breaks	LN-ZMN-TKR-5525-XX	LN-ZMN-TKR-5525-XX	LN-ZMN-TKR-5525-XX	LN-ZMN-TKR-5525-XX	LN-ZMN-TKR-5525-XX	LN-ZMN-TKR-5525-XX



Frequently Used Accessories
19" PROline 400/400P Series Free Standing Cabinet Dimensions (W:Width mm D:Depth mm)

	W:600 x D:600	W:600 x D:800	W:600 x D:1000	W:800 x D:600	W:800 x D:800	W:800 x D:1000
PDU 6 Way Schuko Type, 16A Fused	LN-PRZ-SGT-1U6P-SC	LN-PRZ-SGT-1U6P-SC	LN-PRZ-SGT-1U6P-SC	LN-PRZ-SGT-1U6P-SC	LN-PRZ-SGT-1U6P-SC	LN-PRZ-SGT-1U6P-SC



Frequently Used Accessories
19" PROline 400/400P Series Free Standing Cabinet Dimensions (W:Width mm D:Depth mm)

	W:600 x D:600	W:600 x D:800	W:600 x D:1000	W:800 x D:600	W:800 x D:800	W:800 x D:1000
Mounting Hardware, Fizing M6 Cage Nut Set of 20	LN-DGR-KFS-M620-XX	LN-DGR-KFS-M620-XX	LN-DGR-KFS-M620-XX	LN-DGR-KFS-M620-XX	LN-DGR-KFS-M620-XX	LN-DGR-KFS-M620-XX